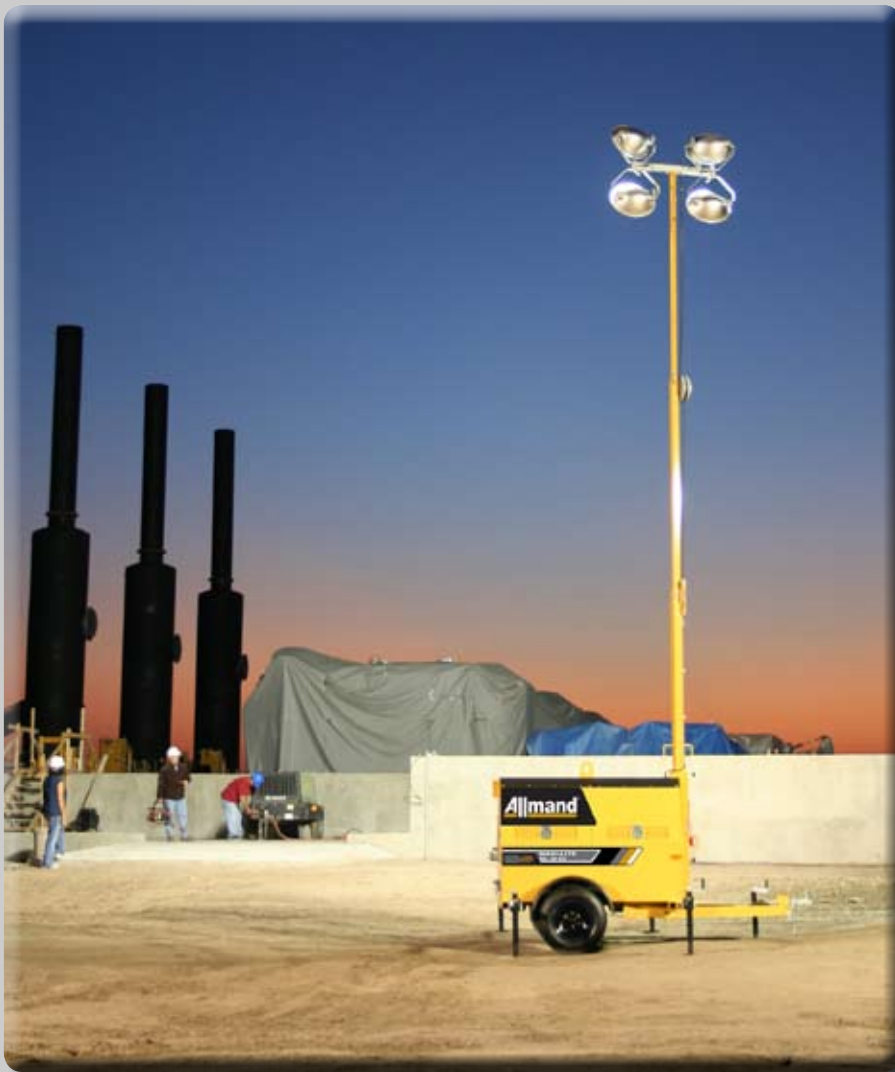


Allmand

Maxi-Lite®

ML 30 EX



- **More power from one unit**--30 kW 3-phase configuration is standard
- **More and better light**--Allmand SHO-HD parallel lamp fixtures provide up to 150,000 lumens per lamp
- **Greater fuel capacity**--135 gallon fuel capacity provides up to 135 hours run time without refueling
- **Environmentally friendly**--trailer features integral Fluid Containment System

Eclipse®

Night-Lite Pro™

TLB™

Maxi-Lite®

Port-A-Lite™

Maxi-Heat®

Strong Past. Dynamic Future.



SHO-HD**MAXI-LITE
ML 30 EX****SPECIFICATIONS**

Engine:	4 cyl, Liquid-cooled diesel: Kubota V3300 1800 rpm Low oil pressure/high temperature automatic shutoff included
Starting:	12 volt electric Glow plug cold starting system
Fuel Capacity:	135 gal. (510 L)
Operating Time:	Up to 135 hrs. (25% load) without refueling Up to 75 hrs. (75% load) without refueling
Lighting:	1,250 watt metal halide HID fixtures Initial output of 150,000 lumens per lamp
Electrical:	Alternator (Generator): 60 Hz, 3-phase, 30 kw Circuits: Hard-wired electrical Ballast: Easily serviceable, "componetized" assemblies Main disconnect breaker and ground rod 2 each 120 VAC/20 amp GFCI, 4 each 240 VAC/30 amp twist lock, and 1 each 120 VAC/30 amp "RV" (three blade) receptacles
Tower:	32.5 ft. heavy-duty three-section tower Self-lubricating nylon wear pads Rotation: 360° rotatable from the ground
Trailer:	Frame: Formed, welded steel Hitch: Adjustable height, reversible combination, 2 5/16 in. (57.5 mm) ball, 3 in. (75 mm) pintle hitch Enclosure: 10-gauge side panels and 12-gauge hood Doors: Lockable, 12-gauge lift-up access LED taillights: Stop, turn, and running Forklift pockets and lifting eye Tie down rings Fluid Containment Tray Torsion Axle with Electric Brakes
Stabilizers:	Four-point design Tower center-mounted between two retractable front outriggers and two retractable rear outriggers. Remains operational in wind gusts up to 65 mph (104.6 kph)
Domestic Shipping Weight:	Light Fixtures: 15 lbs. (6.8 kg) (each) Trailer and Mast: 4,000 lbs. (1,800 kg) dry Total Weight: 4,800 lbs. (2,162 kg) with fuel

DIMENSIONS

Height mast raised: 32 ft. 6 in. (9.9 m)
Wheels and Tires: 15 in. 6-Bolt
Overall Length: 15 ft. 4 in. (4.64 m) (lights installed)
Overall Length: 13 ft. 6 in. (4.11 m) (lights stowed)
Overall Width: 77-1/4 in. (1.96 m)
Overall Height: 74-1/2 in. (1.89 m)

**VALUE-ADDED FEATURES**

SHO-HD parallel lamp fixtures provide up to 150,000 lumens per fixture. An optional Saf-T-Visor attachment directs previously wasted light onto the worksite.

Captive latch on tower support and outriggers eliminates potential for lost pins.

Exclusive bi-directional cable reel is standard and plays out and rewinds electrical cable as tower is raised or lowered.

135-gallon fuel tank with convenient fill neck on each side simplifies refueling and service. Provides up to 135 hours of continuous operation.

Optional inside lamp storage for four light models allows for better security of the exclusive SHO lamp fixtures when the lighting system is not being used.

Hinged ballast panel swings out for ease of service. Only two bolts to remove for full access.

Skid-mounted engine/gen set provides simplified engine/generator removal or change out.

OPTIONS

Saf-T-Visor
Four lamp inside storage option
Electric Winch
Sound attenuation
Six light metal halide option
Four high pressure sodium lamp option
Arctic models available

Allmand

ALLMAND BROS. INC.
1502 West 4th St.
Holdrege, NE 68949
PH. 800.562.1373 Fax 308-995-5887
www.allmand.com www.abetterlight.com

*Reliability, performance,
and integrity since 1938*

